



# Linewize Courses

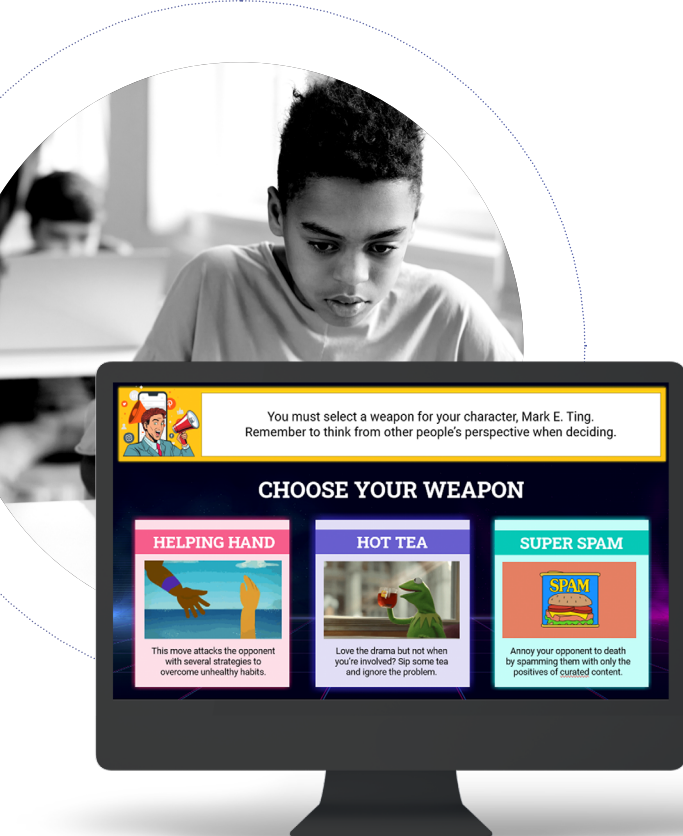
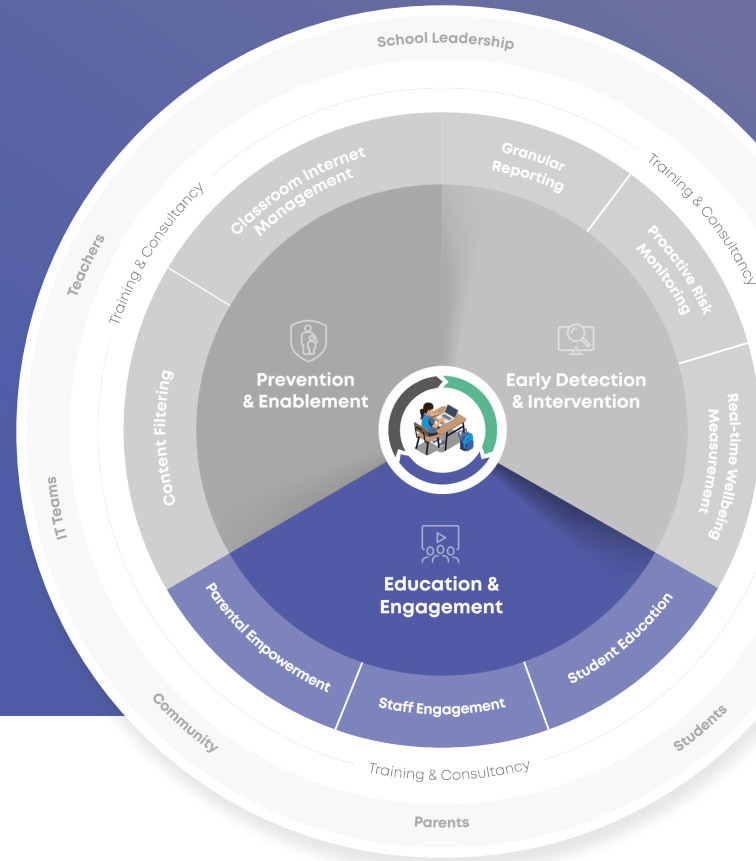
Online courses that teach students how to become resilient and ethical digital citizens.



# About Linewize Courses

When a child is safe and resilient online their wellbeing can increase, their learning can improve and their future can transform.

Linewize Courses is a series of interactive learning courses designed to give students the resilience, self-regulation and online safety behaviours needed to thrive in their digital lives.



## Highlights

### Fun and interactive courses for students

A series of interactive learning courses specifically designed for students aged between 7 and 13 years.

### Helping students to thrive in their digital lives

Designed to build resilience, promote self-regulation and develop essential online safety skills, they help students to grow and thrive in the digital world.

### Available as a module in Classwise

Teachers can seamlessly introduce these powerful courses for students to do in class or at home, quickly and easily.

# Linewize Courses features & benefits

## Teaches students how to become digitally resilient and ethical citizens:

### ✓ Promotes media literacy across 6 key pillars:

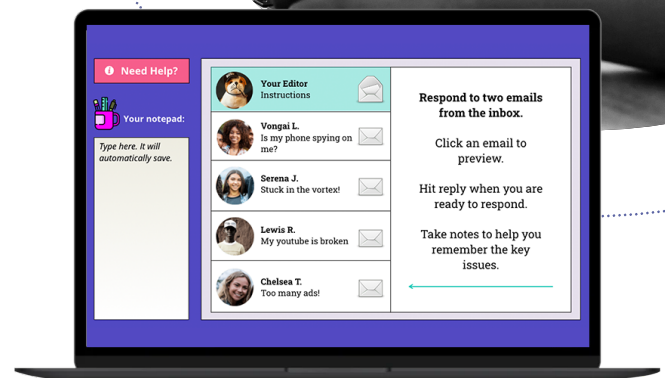
1. Mental health & wellbeing
2. Privacy & information safety
3. Respectful relationships
4. Human rights & compassion
5. Digital media literacy
6. Digital footprint & online personas

### ✓ Designed by specialists

Designed by specialist teachers, learning designers and clinical psychologists to meet the needs of students today.

### ✓ Encourages resilience

Supports critical thinking and emotional intelligence, as well as self-regulation and positive behaviours.



## Maximises learning:

### ✓ Focus on fun

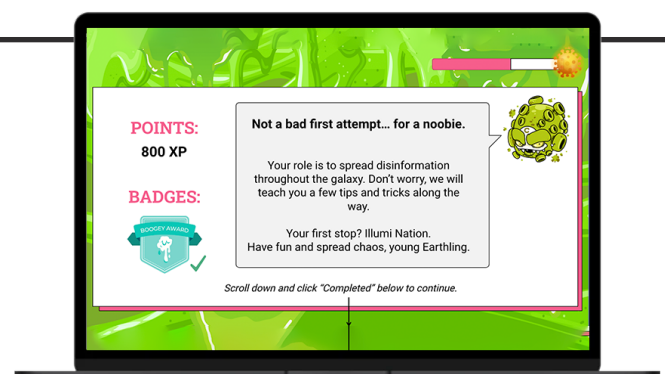
Gamification and high levels of interactivity make learning fun and boost knowledge retention.

### ✓ Self-paced learning

Makes it easy for students to go at their own pace to help increase engagement and motivation.

### ✓ Student-centred

Student-centred learning makes content relatable and places the students' interests, needs and abilities at the core of the learning experience.



# Linewize Courses

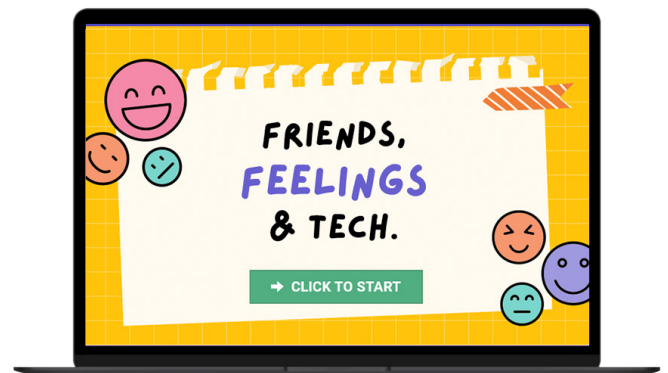
## features & benefits



### Designed for education settings:

- ✓ **Aligns to curriculum standards**  
Course learning outcomes, assessments and activities have been aligned with curriculum standards.
- ✓ **Easily integrates into teaching**  
Teachers can seamlessly introduce the courses into lessons or set them as part of homework.
- ✓ **Meets learning objectives**  
All courses include evidence-based pre- and post-assessment as well as teaching resources that correlate with learning objectives.

*harnessing the power  
of connection*



## Linewize Courses are part of our School Community suite of solutions

Enabling districts to share tools, resources and ongoing cyber safety education to their parents, teachers and students.



# Linewize Courses in our Digital Safety and Wellbeing Framework



## About our Framework

Our Digital Safety and Wellbeing Framework enables school leaders to explore our solutions as they apply to the three most common pillars found in health and safety planning:

1. Prevention 2. Early detection 3. Education.

Schools can use this, supported by our Linewize team, to identify their priorities and plan the steps needed to achieve a more efficient and robust provision of care.

Our Framework is also a useful way for school leaders to keep abreast of the types of solutions available to them in the market.

As well as to better understand the role each of them plays and how they combine to build a digital wellbeing culture across the whole community.

*none of us is as powerful as all of us*

## The role of Linewize Courses

Linewize Courses sits in the Education & Engagement part of our Framework.

It supports the development of positive, self-directed digital behaviours for students at a critical time in their lives.

Linewize Courses is a vital component in a proactive, digital safety and wellbeing provision.

# More information

---

## Get in touch

To learn more about Linewize Courses and to arrange a demo please contact our team. We are waiting to help.

T: 844 723 3932

W: [www.linewize.com](http://www.linewize.com)

E: [sales@linewize.com](mailto:sales@linewize.com)

## Qoria

Linewize is part of Qoria, a global technology company, dedicated to keeping children safe and well in their digital lives. We harness the power of connection to close the gaps that children fall through, and to seamlessly support them on all sides - at school, at home and everywhere in between.

Find out more  
[www.qoria.com](http://www.qoria.com)

[linewize.com](http://linewize.com)



**Linewize**  
by Qoria

